

High-Performance Technology for Demanding Clinical Needs

# myvet CT Plus



## ENGINEERED FOR SPEED, POWER AND DIAGNOSTIC EXCELLENCE



Superior Image Quality Across Broader Patient Size Coverage



Expanded Field of View for Greater Clinical Versatility

Seamless Scanning Workflow

# HIGH-POWER CT PLATFORM DESIGNED FOR DEMANDING CLINICAL IMAGING



## Built for High Throughput and Long-Term Reliability

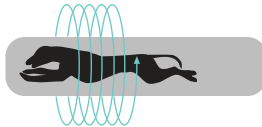
Higher input power and performance headroom ensure stable operation, consistent output, and dependable performance in busy clinical environments.



- High-Power Design for Faster, Cleaner, More Confident Scans
- Power That Expands Clinical Capability
- Engineered Power for Large Patients and Advanced Studies

## Spiral Linear Technology for Exceptional Clarity

The innovative MyVet CT Plus, with linear detector technology specifically designed for small animals, resulting in exceptional image quality and accuracy for diagnosis.



SPIRAL LINEAR SCANNING

Our unique sensor design, along with proprietary image processing, provides you with high image quality especially in soft tissue, thoracic, and abdominal studies.



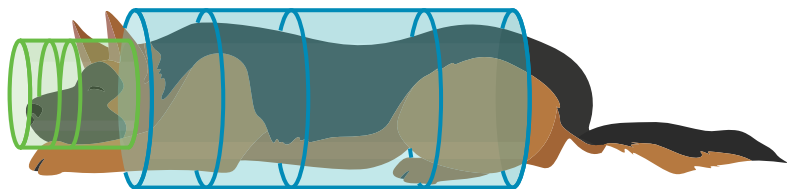
## EXPANDED FOV FOR GREATER CLINICAL VERSATILITY

### Proper FOV selection from 150x60 mm to 300x600 mm

Multiple optimized FOV selections, including Extra-Large and High-Density modes, support a wider range of anatomical studies and advanced imaging protocols.



- Reduced motion artifacts
- Improved patient safety
- Shorter anesthesia duration
- Higher daily case throughput



## INTUITIVE VISUALIZATION TOOLS

### Advanced Analysis Software with Standard 3D Capabilities

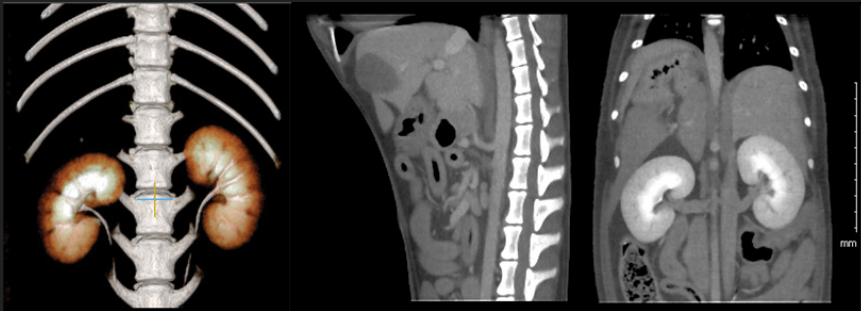
Utilizing a state-of-the-art 3D graphics engine, our viewing software enables precise diagnosis and accurate measurement of affected areas from multiple viewpoints, providing unparalleled insights for veterinary professionals.



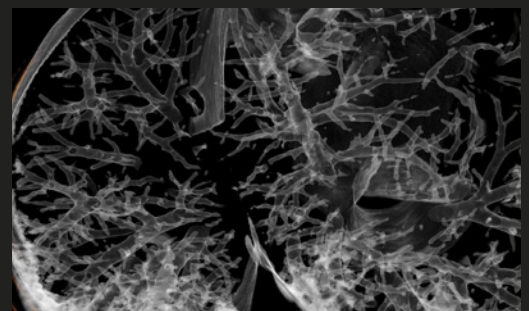
- Small animal specific preset technique
- Intuitive guidance during imaging acquisition process
- Standard 3D rendering reconstruction
- Multi-section view control

# ACQUIRE HIGH QUALITY IMAGES TO MAKE PRECISE CLINICAL DIAGNOSES

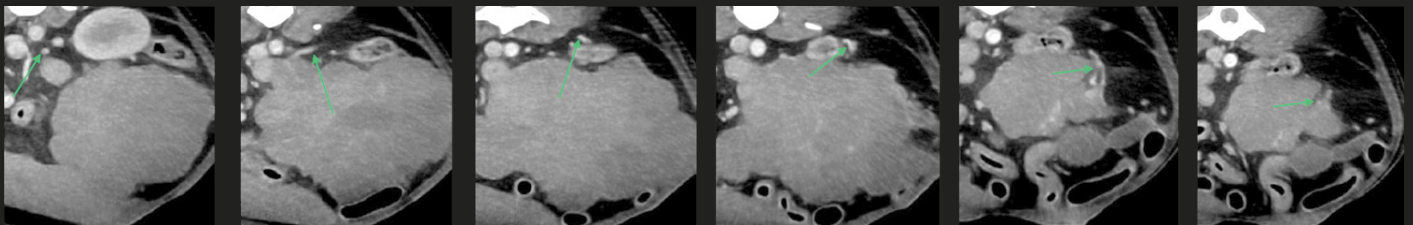
Our unique detector design minimizes scatter radiation, resulting in superior soft tissue visualization compared to cone beam CT technology, which can produce higher levels of scatter radiation and compromise image contrast.



Multiview - 3D in kidney mode, Sagittal view, Coronal view



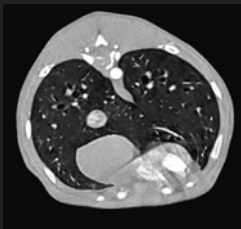
Thorax, Transverse view, Lung slice



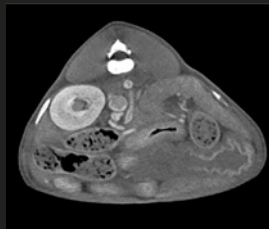
Transverse view, Soft tissue window

## THE PREFERRED WHOLE BODY SCANNING METHOD

The MyVet CT Plus system utilizes a medical reconstruction algorithm that generates high-quality 2D and 3D tomographic images by processing x-ray projection data acquired from various angles around the patient. The selection of specific reconstruction kernels, tailored for different clinical applications, ensures superior image quality.



Thorax transverse plane



Abdomen transverse plane



3D, Soft tissue abdomen mode

### Internal medicine

- Portal, delayed phase
- MPR
- Soft Tissue Abdomen preset
- Soft Tissue Lung preset
- Soft Tissue Kidney preset
- Soft Tissue Blood preset



3D, Panoramic view



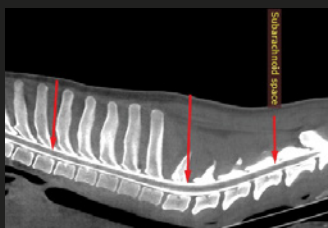
3D, Teeth mode

### Dentistry

- 3D mode
- 3D panoramic view
- Teeth preset



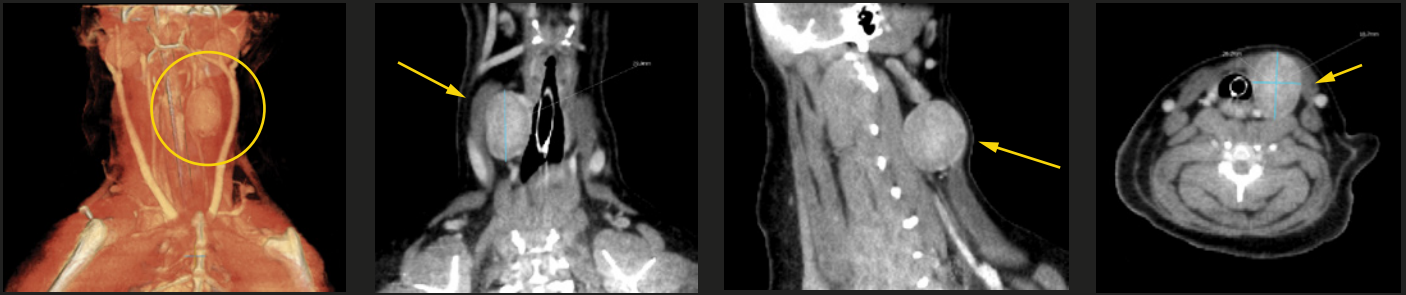
3D, Bone mode



Myelographic image

### Surgical, Orthopedic

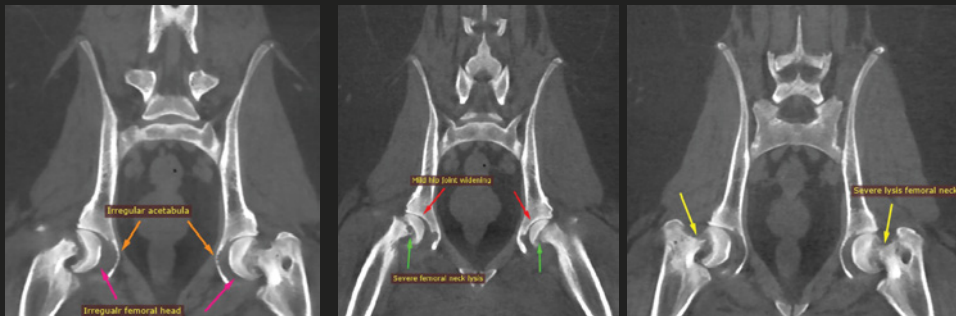
- 3D mode
- Myelographic image
- MPR
- Bone Preset



#### Pomeranian, CT-cervical lesion

Oval shaped, encapsulated homogenous soft tissue attenuated mass in cervical lesion

- Mass location : just right lateral to trachea of cervical 3 level
- Mass size : 30 mm (L) x 26 mm (H) x 18.7 mm
- Mass effect : mild displacement of trachea to left side, medio-dorsal displacement of Rt. common carotid artery.



Dorsal, Bone window

#### Canine, Samoyed, 33kg

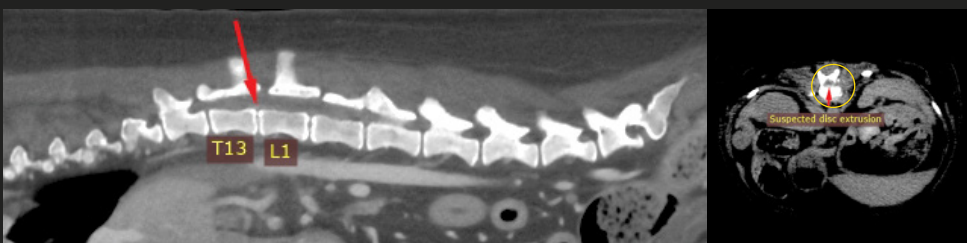
- Bilateral slipped capital femoral epiphysis (SCFE)
- Dorsal, Bone window, Pre-contrast



Transverse, Soft tissue window

#### Canine, Mixed, 15kg

- Bilateral rhinosinusitis



Sagittal, Bone window

Transverse, Bone window

#### Canine, Maltese, 4.4kg

- IVDD (extrusion suspected) at T13-L1, >40% compression
- T13-L1, intraspinal central



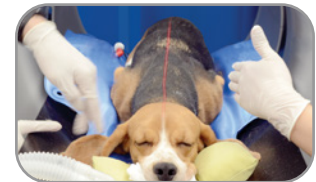
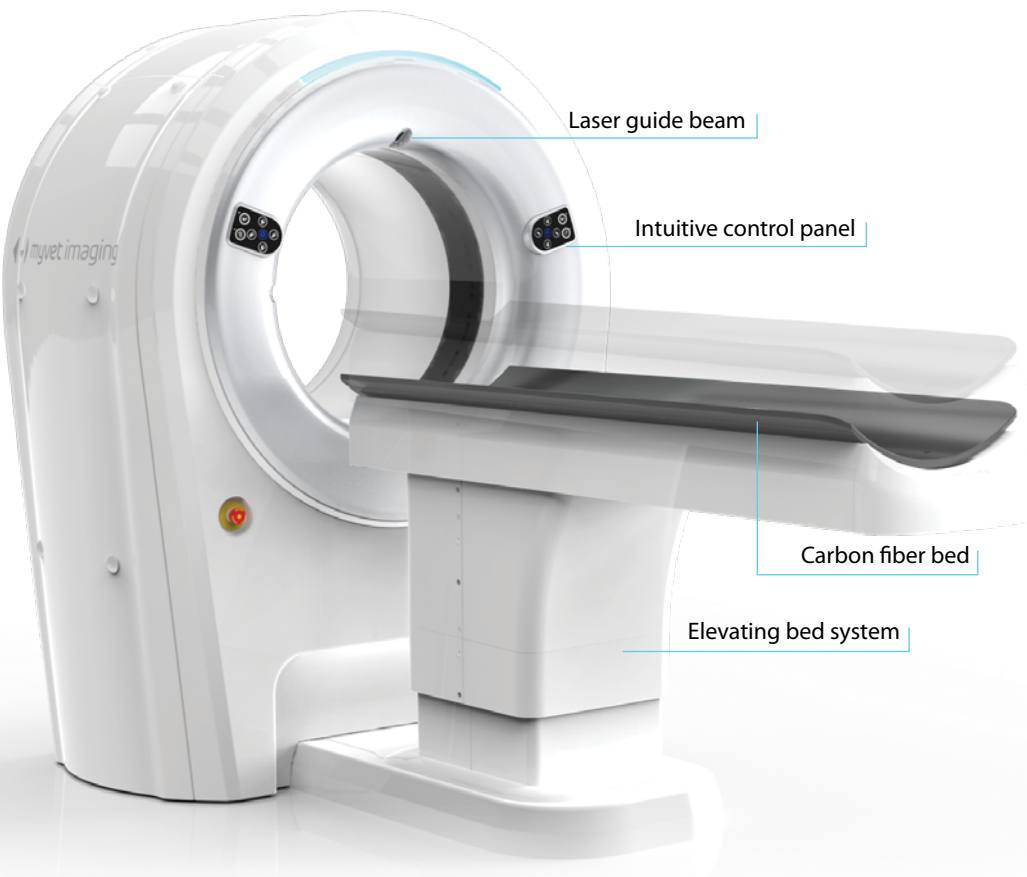
#### Maltese, CT-Pelvic fracture

- Bilateral iliac body Fx.
- Rt. pubic Fx.
- Deformans in L4-5

# ENHANCED WORKFLOW IN A COMPACT FOOTPRINT

## Seamless Scanning Workflow and Smooth Patient Access

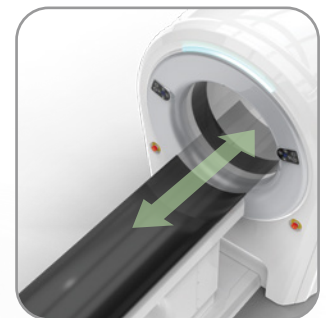
MyVet CT Plus features a motorized elevating, carbon fiber bed, which can be conveniently controlled via a panel on the system. This provides easy and comfortable access to the gantry for both the operator and the patient, ensuring an efficient scanning process.



Laser guide beam



Easy control panel



Motorized sliding bed

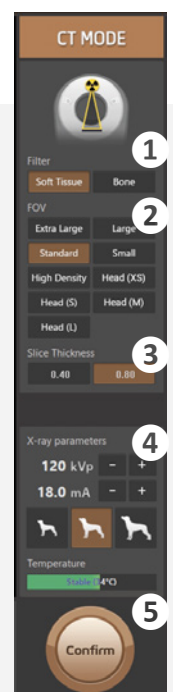
## THE POWER OF SIMPLICITY

### Easy to Learn, Easy to Use

MyVet CT Plus is designed with simplicity and ease-of-use in mind, allowing even non-experienced technicians to quickly learn and operate the system. With intuitive controls, the operator can easily select the patient type, appropriate technique, and initiate scanning with the push of a button. This streamlined process reduces the potential for operator error, ensuring consistent and accurate results.

### As Simple as 5 Steps for Scanning

- 1 Select CT Mode
- 2 Select FOV
- 3 Select Slice Thickness
- 4 Select Parameters
- 5 Select Confirm

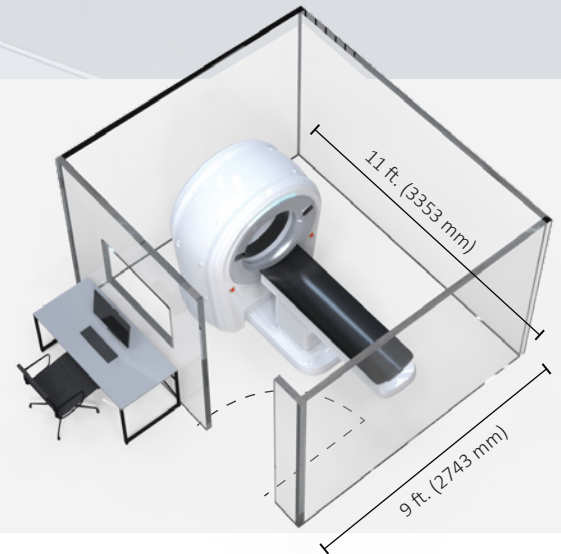




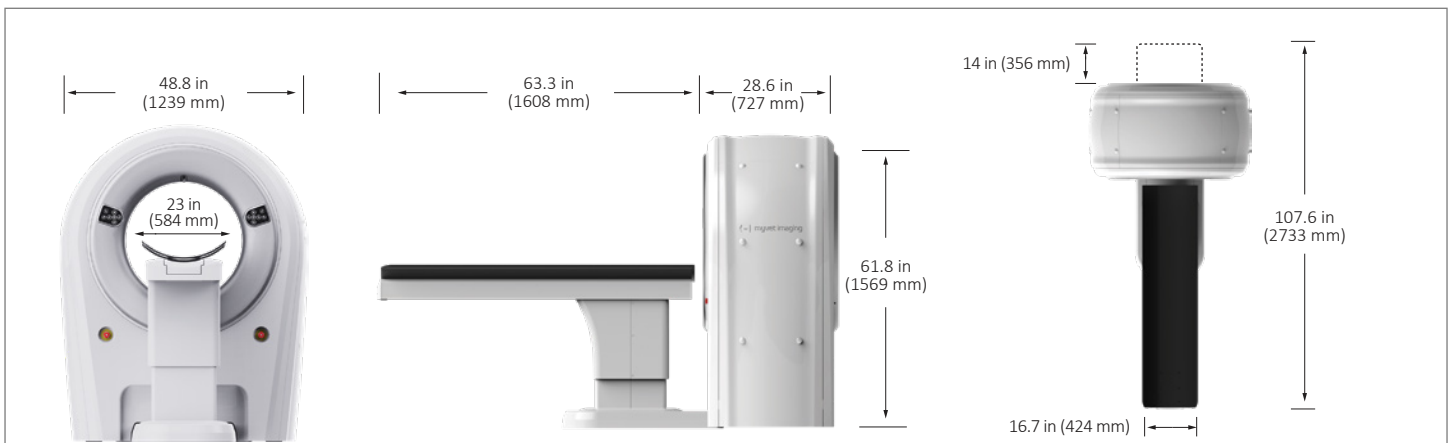
Cost-effective solution for veterinary practices that require advanced imaging capabilities.

MyVet CT Plus can be easily installed in most common small veterinary clinic rooms without the need for extensive modifications. Our CT system provides a cost-effective solution with reduced installation and operational expenses, making it an economical choice for veterinary practices.

- Space-Saving Design
- Efficient Running Cost
- Affordable Installation
- Cost-Effective Maintenance



## SPECIFICATIONS



Item	Description
Weight	1286 Lbs (583.5 kg)
Dimensions (L x W x H)	93.7 x 48.8 x 61.8 in (2380x 1239 x 1569 mm)

Item	Specification
Tube Voltage	60 - 120 kVp
Line Voltage (Input)	220 - 240 Vac
Installation type	Base - column - bed integrated type

\* Specifications subject to change without prior notice \*